

# ASD Quality Program

---

## Strategic Plan Committee

---

— 9.12.17 —

---

---

# Agenda

- I. Outcomes
- II. Introductions
- III. Norms
- IV. Transparency & why?
- V. Review Identified Priorities
- VI. Curriculum, Instruction, Methodology “Deep Dive”
- VII. Continuous Improvement Planning - PDSA Cycles update
- VIII. Closing



# Outcomes



## → Long-Term Target:

- ◆ To ensure that we have aligned improvement strategies and interim measures identified for the ASD Quality Program for student success

## → Current Targets:

- ◆ To review improvement strategies in the Instruction, Curriculum, & Methodology Domain

# Introductions



- Name, connection
- One new learning from last year around our ASD work
- One thing that you did this summer

---

# Group Norms

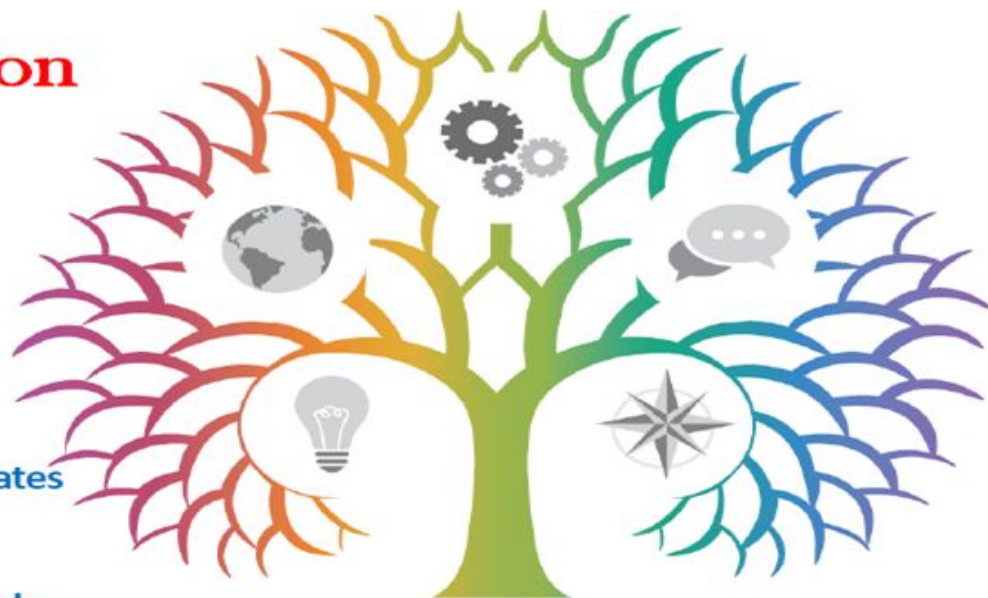
- Start and end on time
- Positive presuppositions
- 1 person talks at a time
- Focus on our purpose
- Consensus model for decision-making



# Jeffco 2020 Vision

## The Vision

In order for  
students  
to pursue  
their life goals,  
by 2020  
all Jeffco graduates  
will be able to  
successfully apply  
the following  
competencies:



**JEFFCO**  
2020 Vision

Content Mastery | Civic & Global Engagement | Communication  
Critical Thinking & Creativity | Self-Direction & Personal Responsibility



We need to be **Aggressively Authentic** about  
**changing** the student learning  
**experience"** - Dr. Jason Glass, July 20, 2017

# We believe:

**In schools that show *high performance for students with disabilities*, special education serves more as a *support for general education* than as a separate program.**

*International Center for Leadership in Education*





***The purpose of the Jeffco ASD Quality Program Strategic Plan Committee is to prioritize the work needed to achieve our district initiative: To have all center programs serving students with Autism be recognized as model CDE Autism Quality Programs by 2020.***

# Open and Transparent Communication



Building Bright Futures.



[HOME](#) [ABOUT JEFFCO](#) [ACADEMICS](#) [DISTRICT SERVICES](#) [PROGRAMS](#) [SCHOOL INFO](#) [EMPLOYMENT](#)

Special Education

Jeffco Public Schools / Programs / Special Education / ASD Strategic Plan Committee

## ASD Strategic Plan Committee

Birth to Age 5 Services

Family Engagement & Support

Schools & Programs

Transition Services

## ASD Strategic Plan Committee

The ASD (Autism Spectrum Disorder) Strategic Plan Committee's focus is on developing the existing centers serving students with Autism into model Colorado Department of Education Quality Programs. It is comprised of 20 members, including special education service providers, school administration, central leadership, parents, and community members.

### 2017 COMMITTEE MEMBERS

NAME	ROLE
Karen Brass	Parent (MS, SSN)

### DOCUMENTS AND RESOURCES

- CDE Autism Program Quality Indicators
- Parent Resources and Events - Summer 2016

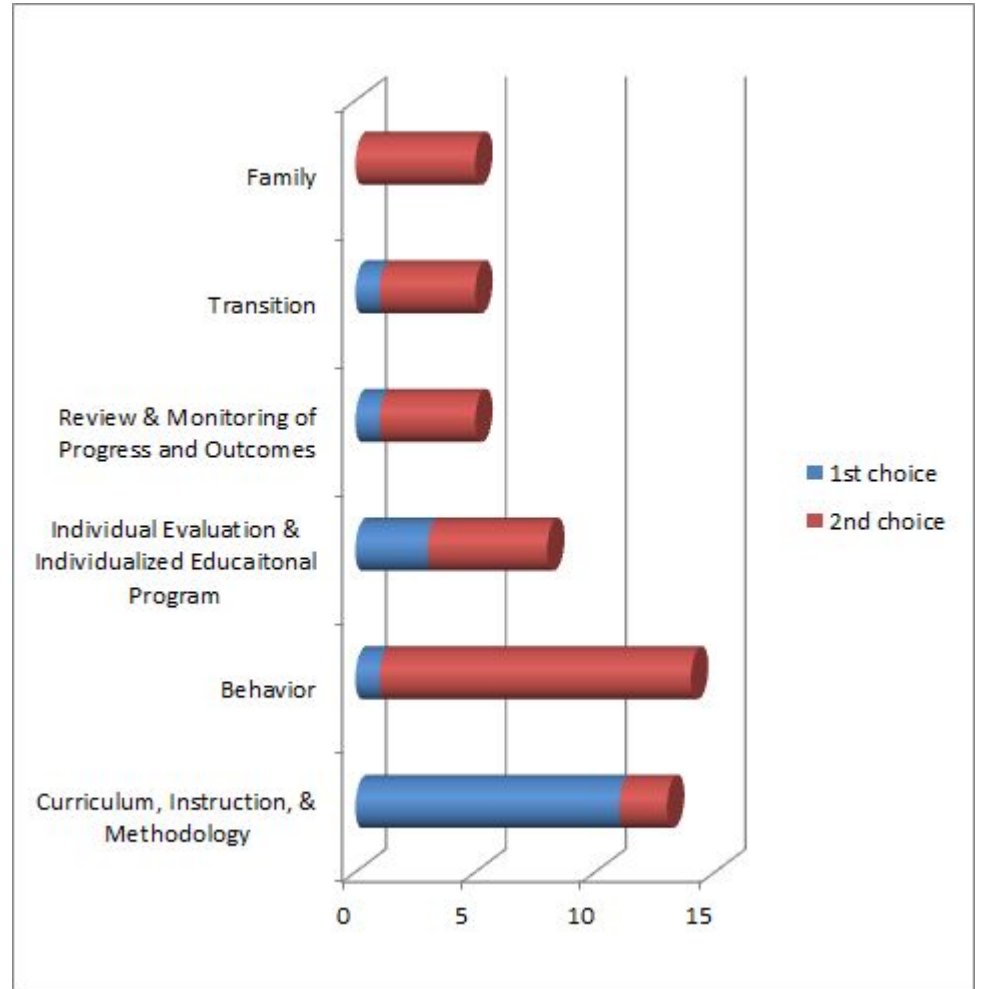
# Why Change what we are doing?

- We know that students with autism are capable of learning
- **All** students can and should reach their maximum potential
- Jeffco 2020's vision is to prepare all students to pursue their lifelong goals
- Assures equitable education opportunities
- Research-based approach of what supports students with ASD
- Best practices used to support students with ASD are identified in the CDE ASD Quality Indicators



# Review of Priorities

March 2016




# Identified Domains/Priorities

AUTISM PROGRAM QUALITY INDICATORS

Administrative Unit

School Year

Evaluation Site/Student



**COLORADO**  
Department of Education

# Importance of CDE Autism Quality Indicators

- CDE Autism Quality Indicators (evidence-based) are best practice for students with Autism.
- CDE Autism Quality Indicators address the core deficits related to Autism.
- Students with ASD benefit from environmental supports such as the use of visual schedules.
- Students with ASD benefit from direct instruction in functional communication.
- Students with ASD benefit from daily direct instruction in social skills.

# Autism Program Quality Indicators

- guide provider evaluation of individual and classroom based programming
- guide school leaders in evaluation of center programming
- guide district leaders in the evaluation of strategic systems/resources of high quality programming

## AUTISM PROGRAM QUALITY INDICATORS

Administrative Unit

School Year

Evaluation Site/Student



**COLORADO**  
Department of Education

# Six Domains

- Individual Evaluation & Individualized Education Program
- Curriculum, Instruction and Methodology
- Review & Monitoring of Progress & Outcomes
- Family Involvement & Support
- Transition Planning
- Behavior



# 3 Non-Negotiables of Autism Quality Programming

CDE ASD Quality Program Indicators: Domain 2: Indicator 2) Curriculum emphasizes (when applicable for pre-k-12) the development of skills across multiple domains, including:

1. Every center-based student with Autism will have an appropriate **visual schedule**.
2. Every center-based student with Autism will have daily **social skills instruction**.
3. Every center-based student with Autism will have appropriate **functional communication instruction**.

# Percent of Teams that achieved 75% of higher implementation rate:

Pre-Test:

Visual Schedules: 53%

Social Skills: 28%

Post-Test:

Visual Schedules: 55%

Social Skills: 67%



# Curriculum, Instruction, & Methodology



# Curriculum, Instruction, & Methodology Priorities:

5/17/16 Priorities Identified in Curriculum, Instruction, & Methodology from CDE Autism Quality Program Indicators:

1. 2)e) Curriculum emphasizes the development of skills across multiple domains including: academic skills to meet the content standards and address the expanded benchmarks
2. 8) A variety of instructional formats are utilized such as direct instruction, small group instruction, student-initiated interactions, teacher-directed interactions, independent work, play, and peer-mediated instruction.
3. 9) Meaningful instruction takes place in the general education environment with typical peers to the extent appropriate.



# Curriculum Instruction & Methodology Deep Dive



# Continuous Improvement

PDSA Cycles

“Elbow Partner”



# Focus

Continued Professional Learning for

Student Success

Walk Thrus

Educator Effectiveness

Behavior/Transitions



Next Meeting:  
October 10, 2017  
4:30-6:30pm  
Ed Center 3A/3B





Committee Members,  
Agendas, and Outcomes  
now posted on:



**The Jeffco Schools Home Page-Schools and  
Special Programs-View Special Schools and  
Programs-Special Education-Autism-ASD  
Quality Program Strategic Plan Committee**